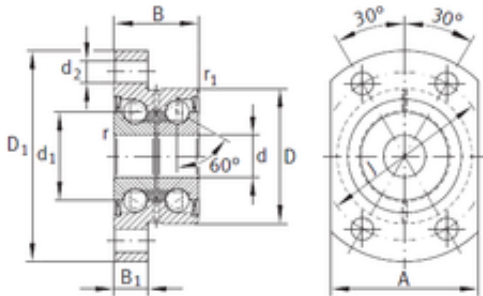




BEARING SUDAMERICANA, S.A.

10 mm x 32 mm x 20 mm INA
ZKLFA1050-2RS angular contact ball bearings



Bearing No. ZKLFA1050-2RS

Size	10x32x20 mm
Bore Diameter	10 mm
Outer Diameter	32 mm
Width	20 mm
d	10 mm
D	32 mm
B	20 mm
C	20 mm
Screw	M5
Angle (?)	60 °
d1	21 mm
d2	5,5 mm
r min.	0,3 mm
r1 min.	0,6 mm
A	35 mm
B2	8 mm
D1	50 mm
J	40 mm
da min.	14 mm
da max	27 mm
Weight	0,18 Kg
Dynamic load rating axial (C)	13,4 kN
Static load rating axial (C0)	18,8 kN

ZKLFA1050-2RS Bearing 2D drawings and 3D CAD models